

Indicateur de consommation d'eau pour la douche Amphiro b1 connect

amphiro

amphiro b1 smart shower meter

Hot water equals energy

You decide how much energy you use – for a variety of things. With amphiro b1 you keep track of your hot water consumption. That way, you can pursue energy efficiency goals or simply get a sense for your personal resource utilization in the shower. The information provided enables you to consciously use thermal energy and motivates sustainable use of precious resources.

Act consciously and conserve energy

With amphiro b1, households reduce their annual thermal energy consumption by 440 kWh and their drinking water consumption by 8'500 litres on average. That way you make an important contribution to reaching the efficiency goals of our society and at the same time you reduce your water and energy bills.

spinoff 

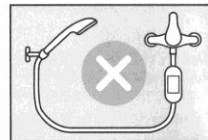
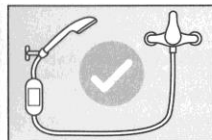
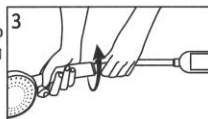
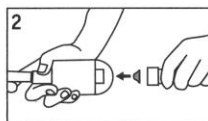
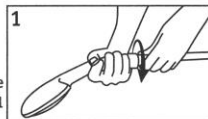


APHH71065-00104

Installation in three easy steps

amphiro b1 is designed for your handheld showerhead.

- 1. Unscrew the showerhead** from the hose.
- 2. Remove the red adhesive tape** at the bottom end of amphiro b1 and ensure that the sieve stays in place; the convex (curved) side must point towards the interior of the device. **Screw the shower hose onto this connector with the sieve.**
- 3. Screw the showerhead into the short hose on amphiro b1.** Be sure to remove the safety cap first and ensure that the sealing ring stays in place inside the hose.



Your smart meter for the shower

amphiro b1 displays the water and energy consumption for every individual shower taken. After a couple of minutes of interruption, a new measurement will start and the display will be reset to zero.



Temperature display

During the shower: Information about the water temperature in Celsius.

Water and energy consumption

- During the shower: Water consumption in litres.
- After the shower: Alternating display of a) energy consumption in Watt-hours (Wh) / kilowatt-hours (kWh), b) water consumption in litres.

Climate animation

Iceberg melts with increasing energy consumption.

Get connected with the Amphiro app

amphiro b1 transmits your consumption data via Bluetooth 4.0® to your mobile iOS or Android device. As soon as you are connected, you can track your consumption data and benefit from various support features.

How to install the free app

1. Download the free Amphiro app for your iOS or Android smart device at Apple's App Store or at Google's Play Store (search for amphiro b1).

2. Connect your smartphone with a Bluetooth 4.0® connection.

3. Once connected, start the Amphiro app and get access to your personal consumption data and benefit from our support features.

! Please note that your smartphone must support Bluetooth 4.0® to connect to amphiro b1.

! Your personal consumption account contains information about your water consumption, the number of showers taken and the water temperature. All information will be treated confidentially and will be evaluated anonymously.



No batteries – powered by the water

amphiro b1 does not use batteries. The device is powered only by the water flow. Once the water flow stops, the device will turn off automatically after a while.

Instructions for use

Please read these instructions carefully.

- Do not submerge the device in water. Do not let it float in the bathtub.
- Do not apply any decalcifiers or abrasive cleaning agents (scouring powder/milk), as they may damage the display.
- This device is not a toy and not suitable for small children. It contains small parts which may be swallowed.
- Do not open the device. Doing so will irreparably damage it, as the compartment sealing will be compromised.
- The device contains a strong permanent magnet as found for example in earphones or name tags. Individuals with a pacemaker should maintain an appropriate safety distance.
- The displayed energy consumption does not account for boiler/furnace efficiency or transportation losses. The values are therefore not suitable for billing purposes.

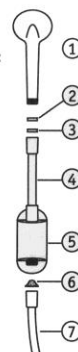
Answers to frequently asked questions can be found at www.amphiro.com/faq

If problems occur or if you have suggestions, please contact info@amphiro.com

This package contains

The emphasized elements are part of this package:

- Showerhead (part of your shower)
- Protective cap (to be removed before installation)
- Sealing ring (underneath the cap at one end of the short hose)
- Short hose
- amphiro b1 smart shower meter
- Sieve with sealing gasket
- Shower hose (part of your shower)



Technical information

All terminals	1/2" standard screw
Application	Water flow range: 5 to 20 litres per minute Temperature: 5 °C to 65 °C Max. pressure: 10 bar
Protection against moisture	Waterproof in accordance with IP65. Do not submerge device in water.
Connection	Bluetooth 4.0® required.
Accuracy	± 10% at 12 litres per minute. Greater deviations may occur at different flow rates.

Manufacturer:
Amphiro AG, Limmatstrasse 183, CH-8005 Zurich





amphiro

b1 connect

Se doucher intelligemment.

amphiro affiche la consommation au moment de la douche et incite à une gestion responsable de l'énergie.





Économiser de l'énergie, tout simplement.

Une étude de l'Office fédéral de l'énergie OFEN a démontré que, avec amphiro, un foyer de 3 personnes économise en moyenne 645 kWh par an. Cela correspond à la consommation annuelle de l'éclairage et des appareils électroniques grand public d'un foyer.




Amphiro AG
Badenerstrasse 60
8004 Zürich
Schweiz
www.amphiro.com

Les atouts d'amphiro b1 connect

- 

La consommation en eau et en énergie s'affiche pendant la douche.
- 

Un comportement responsable entraîne des économies de 215 kWh et de 3 500 litres d'eau potable en moyenne par personne et par an.
- 

Une réduction imperceptible de la pression hydraulique, un confort intact sous la douche.
- 

Compatible avec toutes les douchettes courantes dans le commerce (1/2").
- 

Installation facile entre le tuyau et la pomme de douche – sans outil.
- 

Fonctionne sans piles – l'énergie est produite à partir de l'eau qui s'écoule.
- 

Fonctionne avec et sans smartphone (à partir du Bluetooth 4.0).



Évaluer les données et les partager.

amphiro b1 connect se synchronise au smartphone avec le Bluetooth 4.0. L'appli gratuite amphiro permet d'évaluer les données et de les partager avec des amis.

